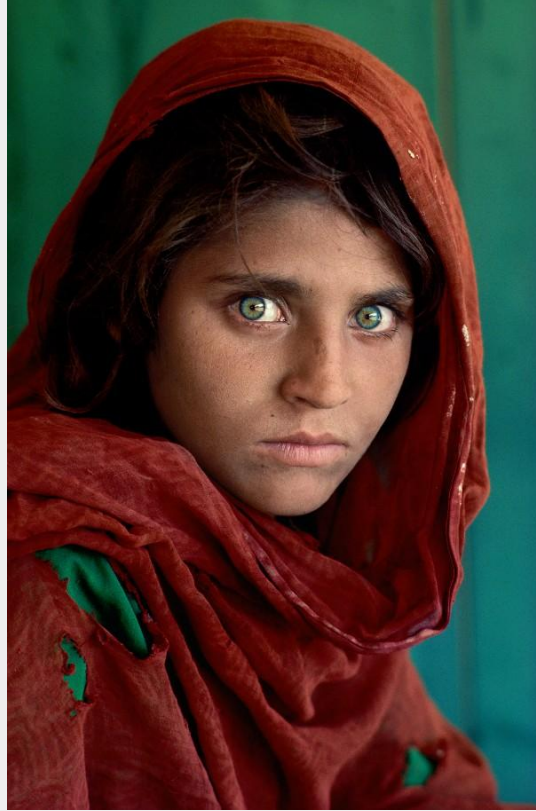
A close-up portrait of a woman with dark hair and light-colored eyes, wearing a red headscarf. The background is a solid teal color. The text is overlaid on a dark horizontal band across the middle of the image.

Incendies : l'influence de Steve Mc Curry



Dossier pédagogique Incendies
Lycéens et apprentis au cinéma en Normandie

1 Prologue : le regard-caméra



2 La scène du bus : compositions

